

CERTIFICATE OF LOCATION OF GOVERNMENT CORNER

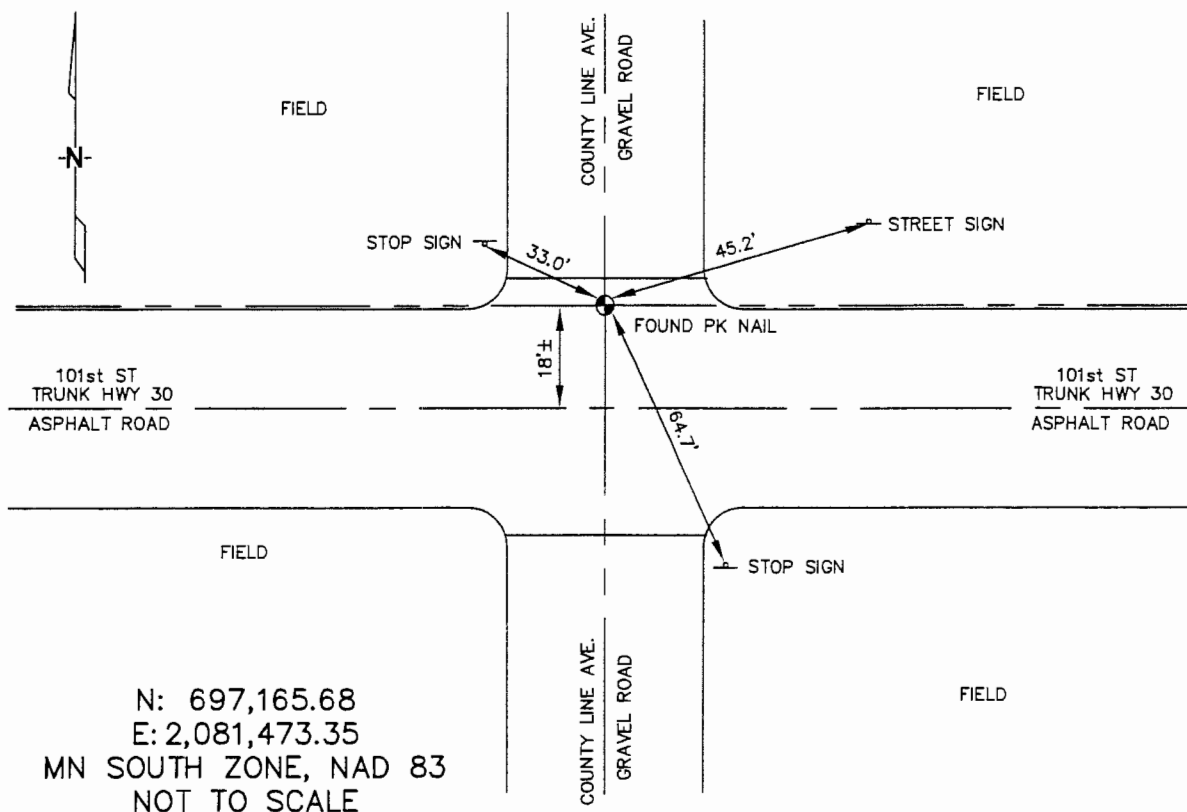
NORTHWEST Corner of Section 18, Township 106N, Range 43W, 5TH P.M.

STATE OF MINNESOTA, County of MURRAY

At the corner location shown on the sketch :

- On 3/23/2006 found A PK NAIL IN C/L OF COUNTY LINE AVE &
18'± NORTH FROM C/L OF 101st ST.
 left monument as found, lowered monument, removed monument (explain)
- On _____ set _____

Sketch of reference ties



Statement of evidence relative to this corner location is on back page

I hereby certify that this document and the data contained herein was prepared by me or under my direct supervision.

Thomas V. Zell 9/27/06
 Thomas V. Zell Date

- Registration No. 44563
- Land Surveyor, Professional Engineer
 County Surveyor, County Engineer

OFFICE OF THE COUNTY RECORDER
 County of _____

SEP 29 2006

I hereby certify that this document was filed in the Co. Recorders office at _____ M. on the _____ day of _____ A.D., 20

County Recorder James V. Johnson
 By _____, Deputy

DOCUMENT NO. _____

STATEMENT OF EVIDENCE:

NORTHWEST CORNER, SECTION 18, T. 106 N., R. 43 W.,
MURRAY COUNTY, MINNESOTA

- 1861 J.W. Myers, US. Deputy Surveyor, monumented the west range line.
- 10/20/1901 Murray Co. placed a 10"X14"X20" stone on the corner, at grade.
Tie: NE-46.5' to fence corner.
- ? Date MN DOT R/W Map for Trunk Highway, calls for the corner being set
from data furnished by the County Engineer; 17.6' north from the
C/L of Trunk Highway 30, at POT Sta 640+22.2.
- 3/23/2006 Ulteig Engineers, Inc., Survey Crew, Dennis Lavallie Party Chief,
found a PK nail in the C/L of County Line Ave and 18'± north
from the C/L of Trunk Highway 30.
Ties: NE-45.2' to C/L steel post of Street Sign;
SE-64.7' to C/L steel post of Stop Sign;
NW-33.0' to C/L steel post of Stop Sign.